

Opinion Box

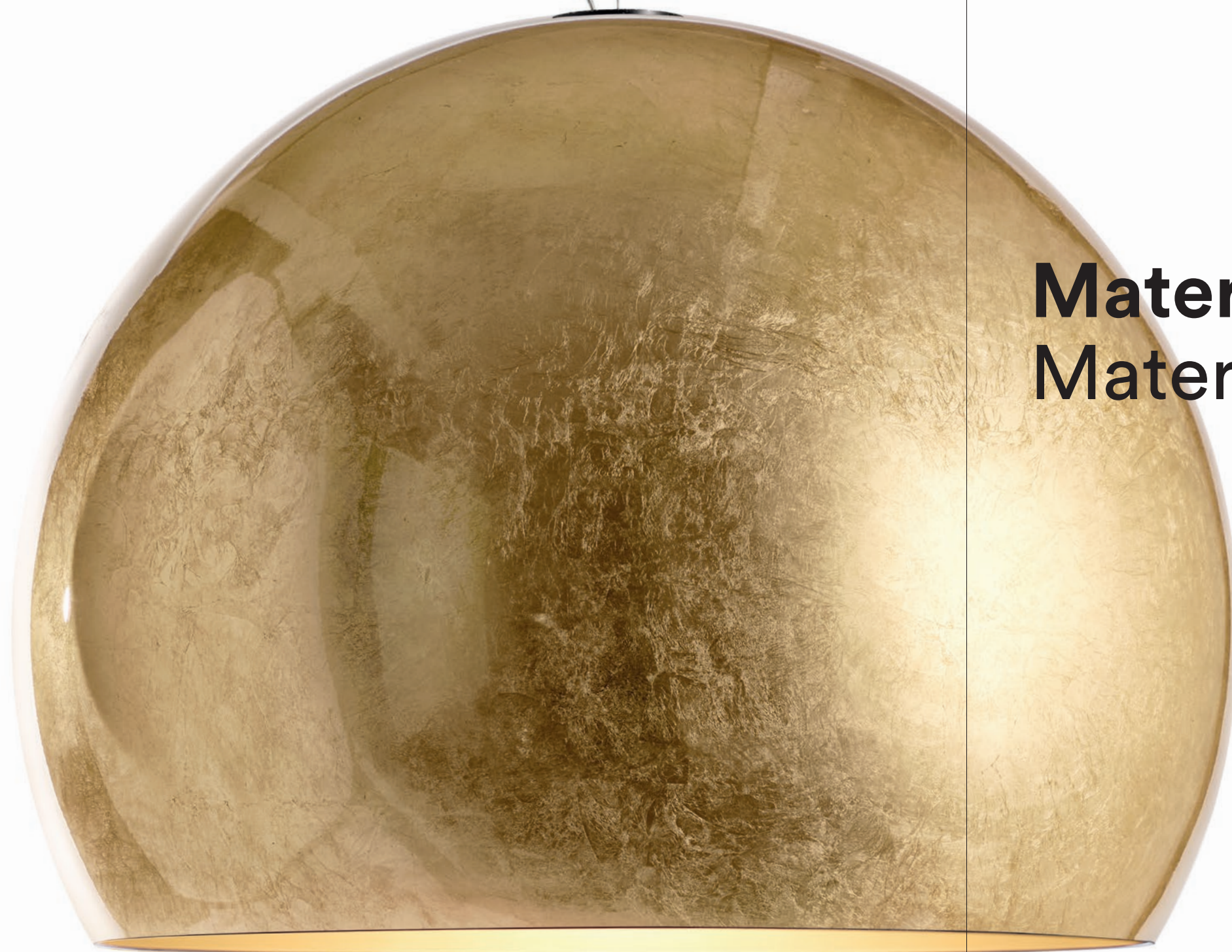
Materials & fabrics 2023

OPINION CIATTI®
FIRENZE

Nota importante / Important note

^{IT} Il colore reale delle finiture può variare rispetto a quello visualizzato sullo schermo o sulla copia stampata.

^{EN} The actual finish colours may be different from those displayed on the screen or printed copy.



Materiali e finiture Materials and finishes

• **FINITURE MATERICHE ECOLOGICHE / ECOLOGICAL TEXTURED FINISHES**

PROTETTIVO / COATING
Opaco / Matt

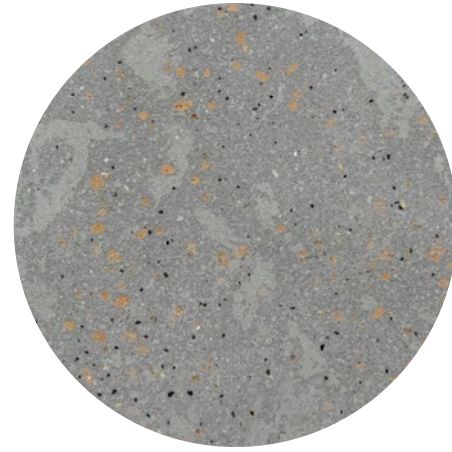
CARATTERISTICHE / CHARACTERISTICS
Applicate a mano, ogni pezzo è unico. / Being hand-crafted, every piece is unique.



Cocciopesto



Cocciobianco



Cocciogrigio

• **VERNICIATURE MATERICHE / TEXTURED LACQUERING**

PROTETTIVO / COATING
Opaco / Matt

CARATTERISTICHE / CHARACTERISTICS
Applicate a mano, ogni pezzo è unico. / Being hand-crafted, every piece is unique.



Bronzo
Bronze



Cemento
Concrete

• **VERNICIATURE SPECIALI / SPECIAL LACQUERING**



Oro metallizzato
Metallic gold

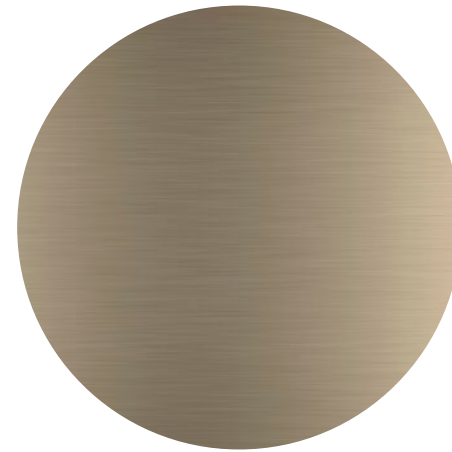


Argento metallizzato
Metallic silver



Corten opaco
Matt corten

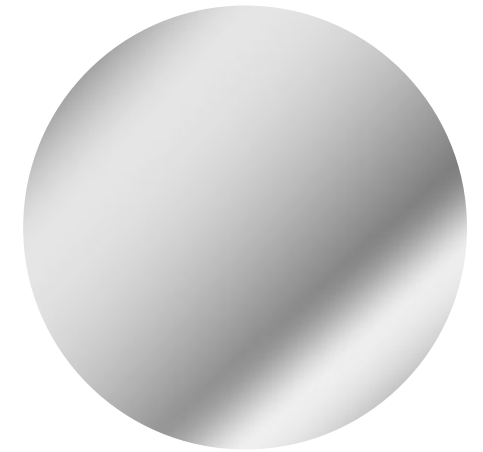
• **FINITURE ANODIZZATE / ANODISED FINISHES**



Ottone brunito
Burnished brass



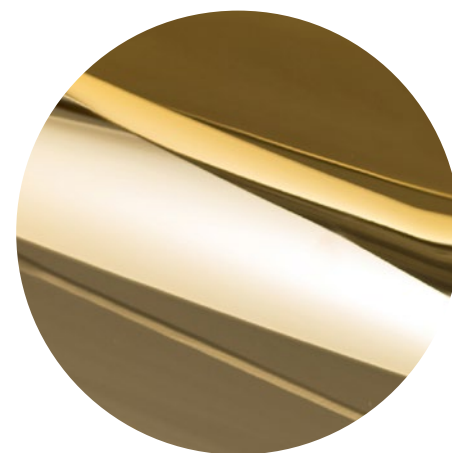
Nero opaco
Matt black



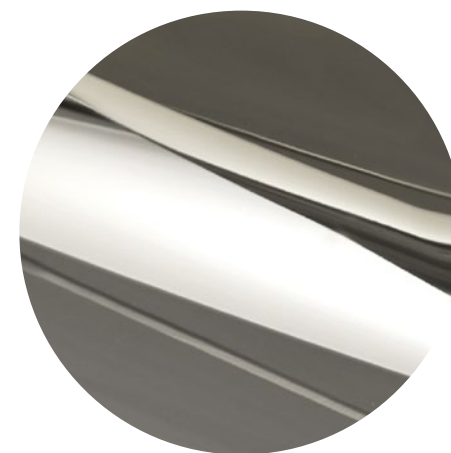
Argento
Silver

• **FINITURE GALVANICHE / GALVANIC FINISHES**

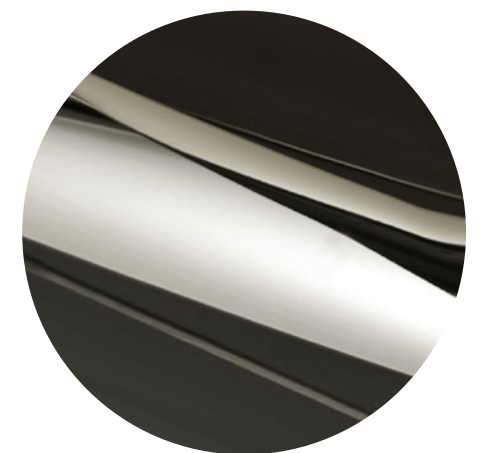
PROTETTIVO / COATING
Lucido / Glossy



Oro 24 K
Gold 24 K



Cromo / nickel
Chrome / nickel



Nickel nero
Black nickel

• **FOGLIE / LEAVES**

PROTETTIVO / COATING
Lucido / Glossy

CARATTERISTICHE / CHARACTERISTICS
Applicate a mano, ogni pezzo è unico. / Being hand-crafted, every piece is unique.



Foglia oro
Gold leaf



Foglia rame
Copper leaf



Foglia argento
Silver leaf

• **CORDA NAUTICA (La Cima) / NAUTICAL ROPE (La Cima)**

COMPOSIZIONE / COMPOSITION
Polipropilene / Polypropylene



Bianco
White



Sabbia
Sand



Nero
Black

• **ALLUMINIO STROPICCIATO (Tab.u Collection) / WRINKLED ALUMINIUM (Tab.u Collection)**

COMPOSIZIONE / COMPOSITION
Alluminio / Aluminium

CARATTERISTICHE / CHARACTERISTICS

Stropicciato a mano, ogni pezzo è unico. / Hand-wrinkled. Being hand-crafted, every piece is unique.



Oro
Gold



Cromo
Chrome

• **ALLUMINIO NATURALE (Mammamia) / RAW ALUMINUM (Mammamia)**

CARATTERISTICHE / CHARACTERISTICS

Ogni pezzo è unico. / Every piece is unique.



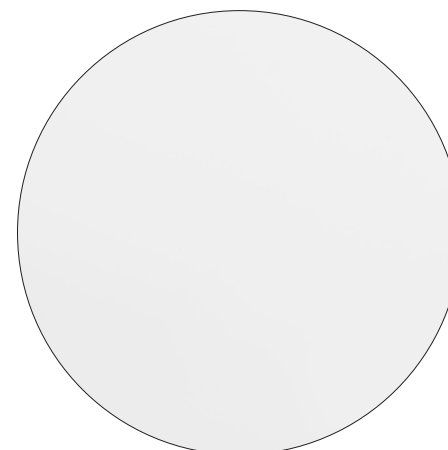
Raw

• **PET**

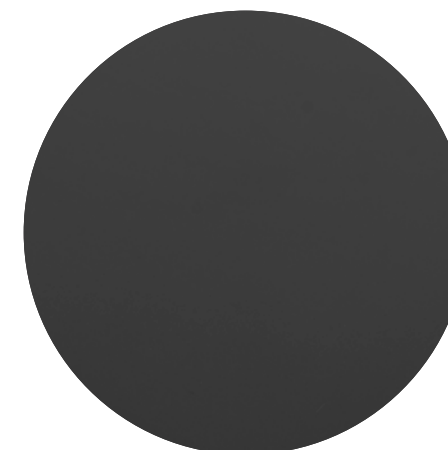
COMPOSIZIONE / COMPOSITION
Polietilene tereftalato / Polyethylene terephthalate

CARATTERISTICHE / CHARACTERISTICS

Ecologico, 100% riciclabile / Eco-friendly, 100% recyclable



Bianco
White



Nero
Black

• **LEGNO / WOOD**

CARATTERISTICHE / CHARACTERISTICS

Tranciato o massello / Veneer or solid wood



Rovere naturale
Natural oak



Frassino sbiancato
Bleached ash



Frassino
Ash

• **SUGHERO / CORK**

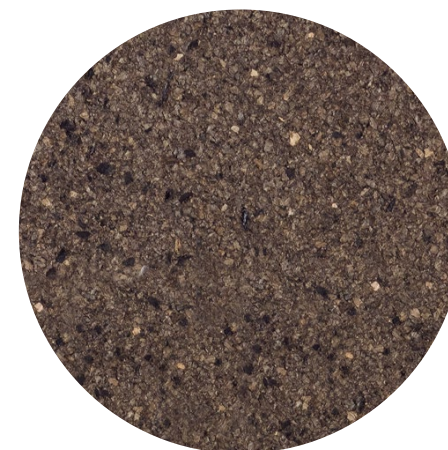
CARATTERISTICHE / CHARACTERISTICS

Agglomerato tostato / Toasted granular cork

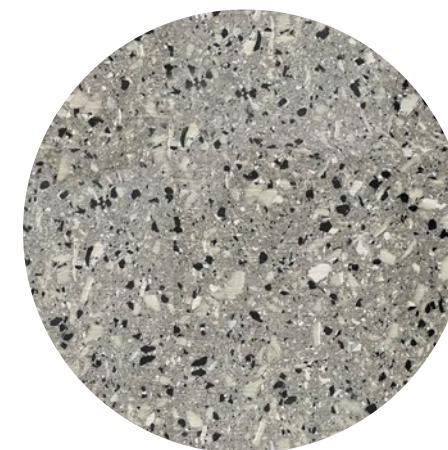
• **VETRORESINA RICICLATA / RECYCLED FIBERGLASS**

CARATTERISTICHE / CHARACTERISTICS

Ecologico, riciclabile / Eco-friendly, recyclable



Sughero bruno
Dark cork




Eco

Nota importante / Important note

^{IT} Il colore reale delle finiture può variare rispetto a quello visualizzato sullo schermo o sulla copia stampata.

^{EN} The actual finish colours may be different from those displayed on the screen or printed copy.



Tessuti e pelle Fabrics and leather

Legenda simboli

Key to symbols

Tessuti e pelle / Fabrics and leather



tessuto / fabric



resistente al fuoco
fire resistant



pelle / leather



non resistente al fuoco
not fire resistant

Pulizia e manutenzione tessuti / Fabrics cleaning and care



lavare a mano / hand wash



non candeggiare / do not bleach



non lavare / do not wash



non asciugare in asciugatrice
do not tumble dry



non lavare a secco
do not dry clean



asciugare in piano
dry flat



temperatura acqua max 30° C
wash at max 30° C



possibile asciugatura in asciugatrice
tumble drying possible



temperatura acqua max 40° C
wash at max 40° C



non stirare
do not iron



temperatura acqua max 60° C
wash at max 60° C



stirare a bassa temperatura (max. 110° C)
iron at low temperature (max. 110°C)



non adatto alla centrifuga
do not spin dry



stirare a media temperatura (max. 150° C)
iron at medium temperature (max. 150°C)



lavaggio a secco con Percloroetilene
dry cleaning with perchloroethylene



stirare a rovescio
iron inside-out

CATEGORIA A / CATEGORY A

• NABUK ECOLOGICO / ECO-NUBUCK

COMPOSIZIONE / COMPOSITION
100% polyester

CARATTERISTICHE / CHARACTERISTICS
Ecosostenibile, vegano / Eco-friendly, vegan

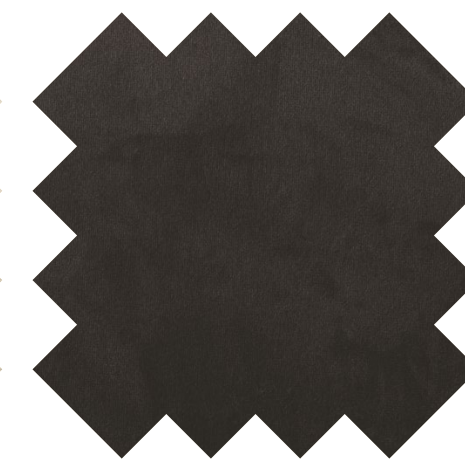
DURABILITÀ / DURABILITY
200.000 Martindale



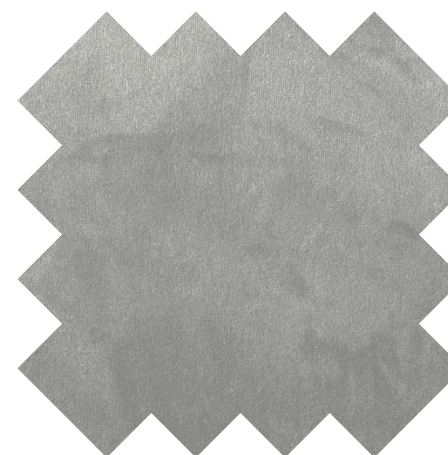
Bianco 01
White 01



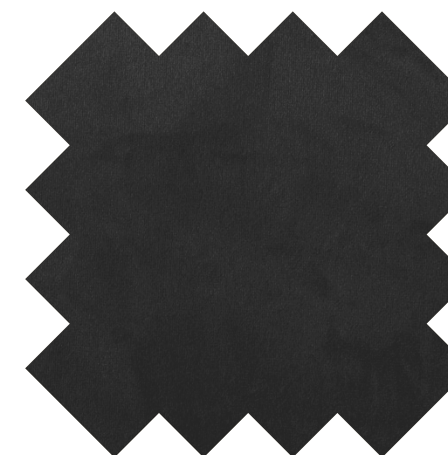
Écru 03
Écru 03



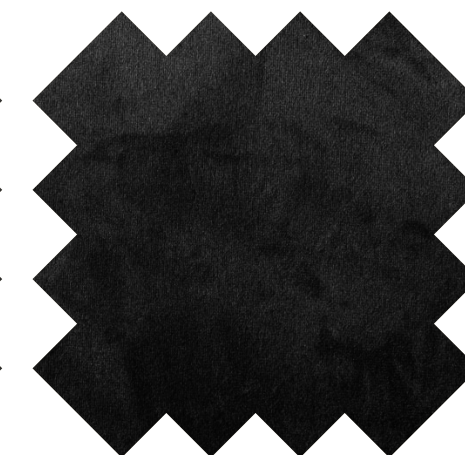
Marrone 25
Brown 25



Grigio chiaro 07
Light grey 07



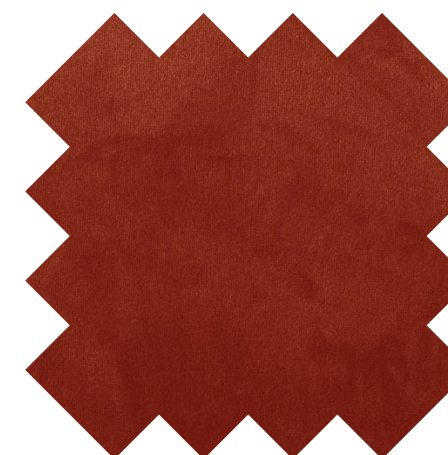
Grigio scuro 11
Dark grey 11



Nero 15
Black 15



Verde 21
Green 21



Rosso 19
Red 19

CATEGORIA A / CATEGORY A

• **MISTO LINO / COTTON-LINEN BLEND FABRIC**

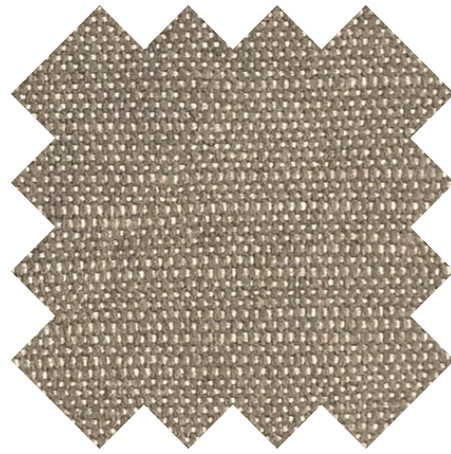
COMPOSIZIONE / COMPOSITION
50% recycled co, 32% vis, 18% linen

CARATTERISTICHE / CHARACTERISTICS
Effetto naturale / Natural effect

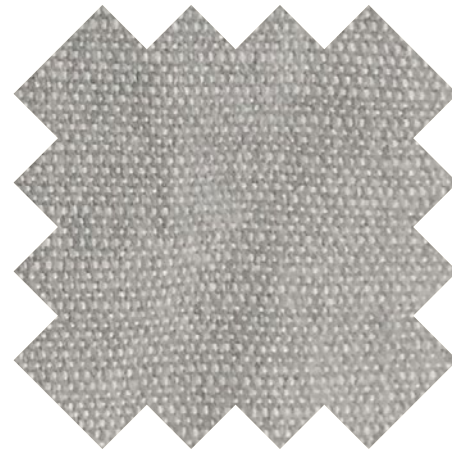
DURABILITÀ / DURABILITY
50.000 Martindale



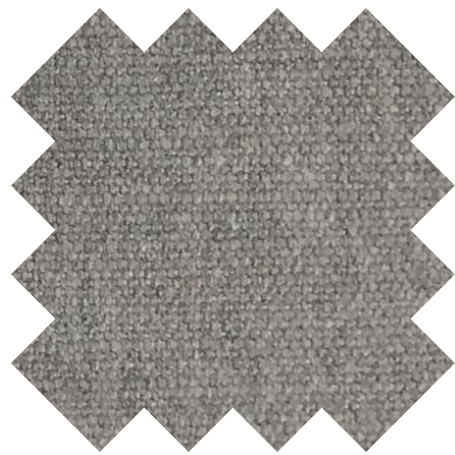
Bianco 01
White 01



Écru 03
Écru 03



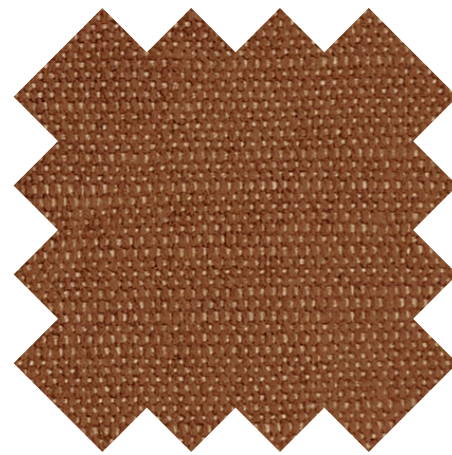
Grigio chiaro 07
Light grey 07



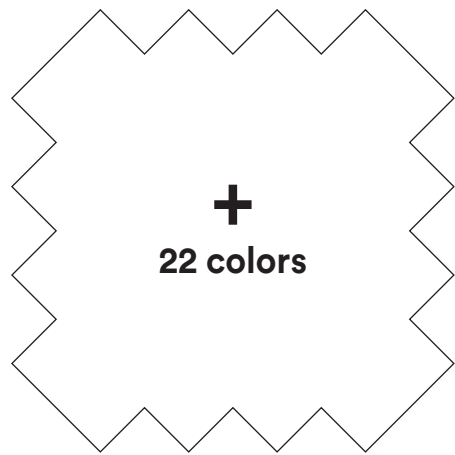
Grigio medio 09
Medium grey 09



Grigio scuro 11
Dark grey 11



Ruggine 35
Rust 35



**+
22 colors**

**A preventivo
Upon request**

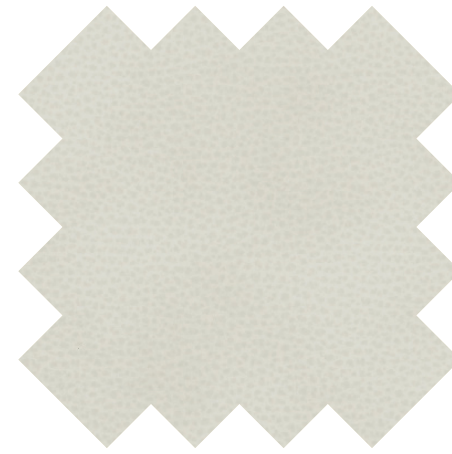
CATEGORIA A / CATEGORY A

• **PELLE SINTETICA VINTAGE / VINTAGE SYNTHETIC LEATHER**

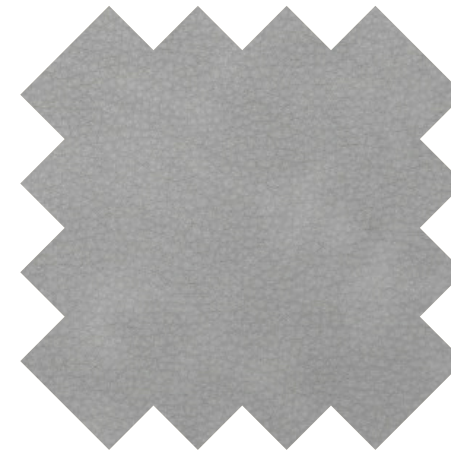
COMPOSIZIONE / COMPOSITION
80% pvc, 18% pes, 2% pu

CARATTERISTICHE / CHARACTERISTICS
Effetto invecchiato / Distressed vintage effect

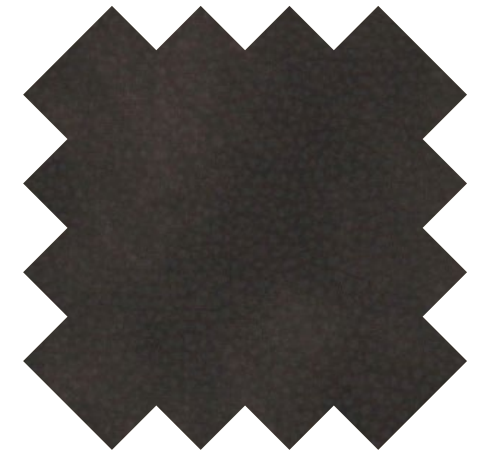
DURABILITÀ / DURABILITY
50.000 Martindale



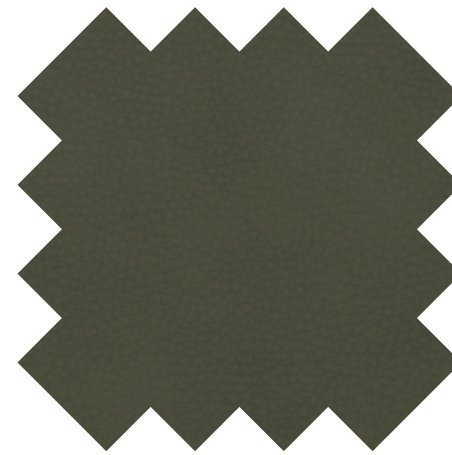
Bianco 01
White 01



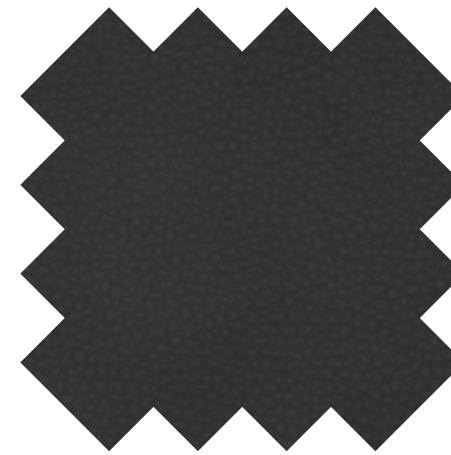
Grigio chiaro 07
Light grey 07



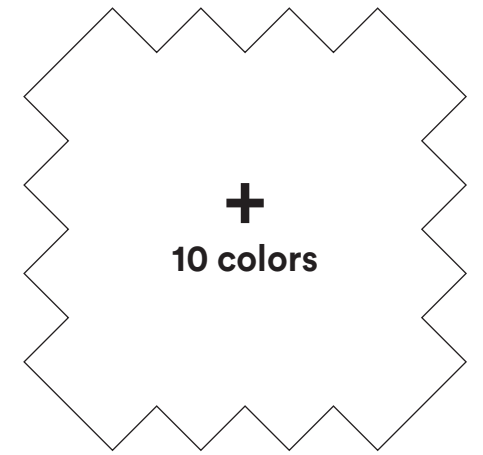
Marrone 25
Brown 25



Verde 21
Green 21



Nero 15
Black 15



**+
10 colors**

**A preventivo
Upon request**

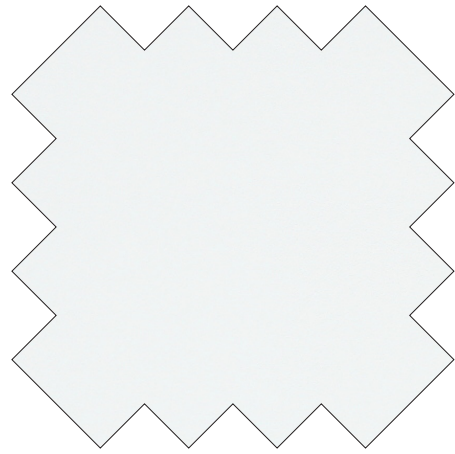
CATEGORIA A / CATEGORY A

• PELLE SINTETICA / SYNTHETIC LEATHER

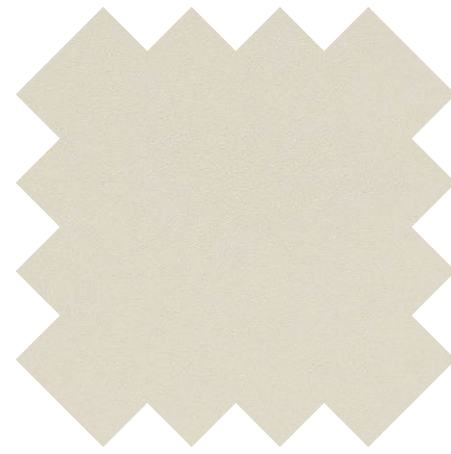
COMPOSIZIONE / COMPOSITION
72% pvc, 25% cot, 3% pu

CARATTERISTICHE / CHARACTERISTICS
Idrorepellente, antibatterico / Water repellent, antibacterial

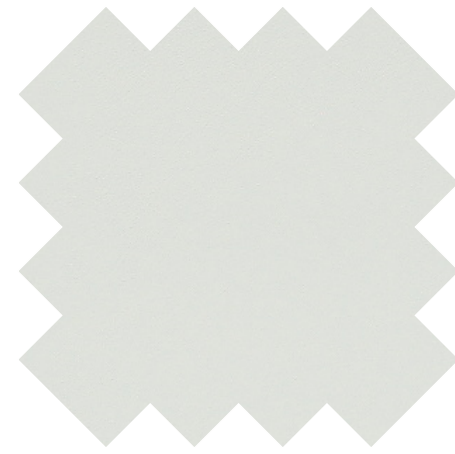
DURABILITÀ / DURABILITY
100.000 Martindale



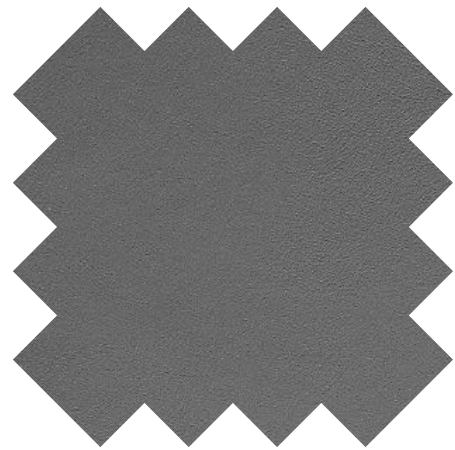
Bianco 01
White 01



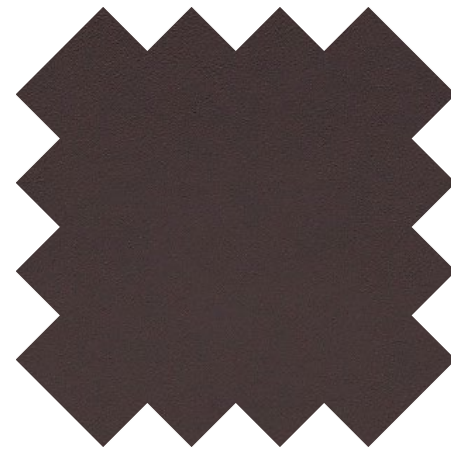
Écru 03
Écru 03



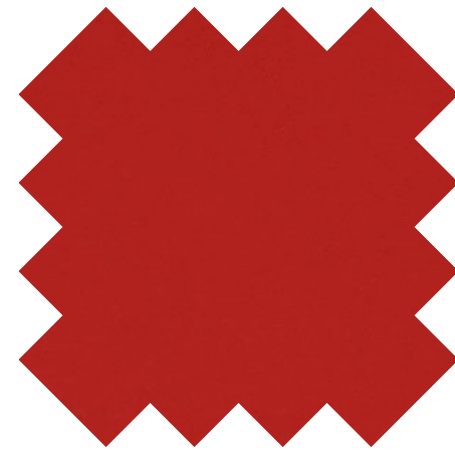
Grigio chiaro 07
Light grey 07



Grigio scuro 11
Dark grey 11



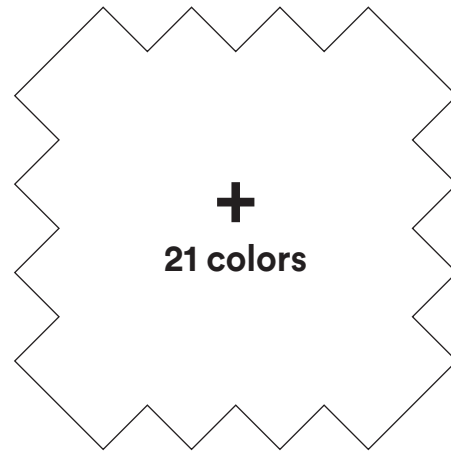
Marrone 25
Brown 25



Rosso 19
Red 19



Nero 15
Black 15



A preventivo
Upon request

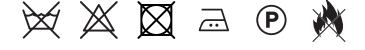
CATEGORIA B / CATEGORY B

• REMIX 3

COMPOSIZIONE / COMPOSITION
90% new wool worsted, 10% nylon

CARATTERISTICHE / CHARACTERISTICS
Ecosostenibile / Eco-friendly

DURABILITÀ / DURABILITY
100.000 Martindale



Panna 05
Cream 05



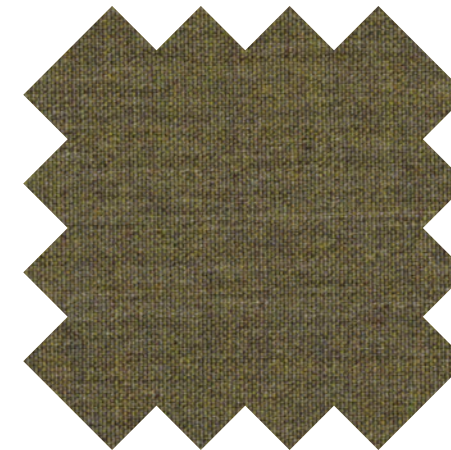
Écru 03
Écru 03



Grigio medio 09
Medium grey 09



Marrone 25
Brown 25



Verde 21
Green 21



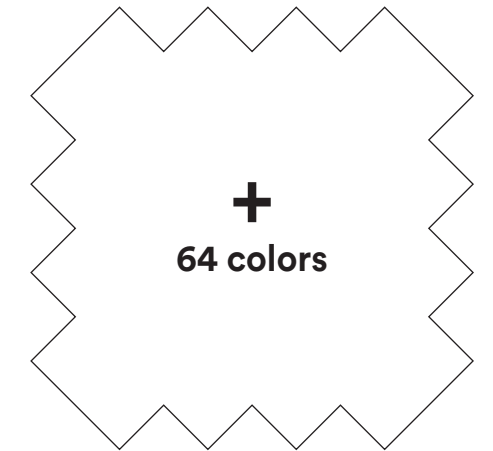
Rosso 19
Red 19



Ruggine 35
Rust 35



Nero 15
Black 15



A preventivo
Upon request

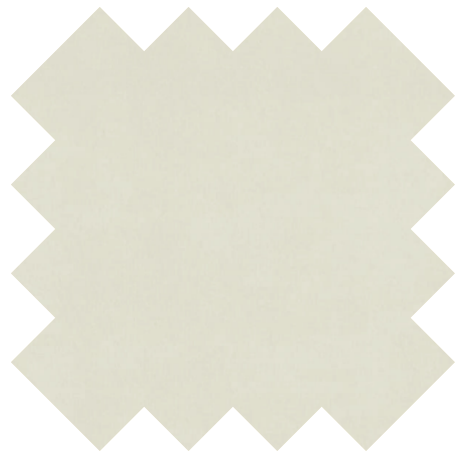
CATEGORIA B / CATEGORY B

• **VELLUTO / VELVET**

COMPOSIZIONE / COMPOSITION
100% cotton

CARATTERISTICHE / CHARACTERISTICS
Idrorepellente / Water repellent

DURABILITÀ / DURABILITY
100.000 Martindale



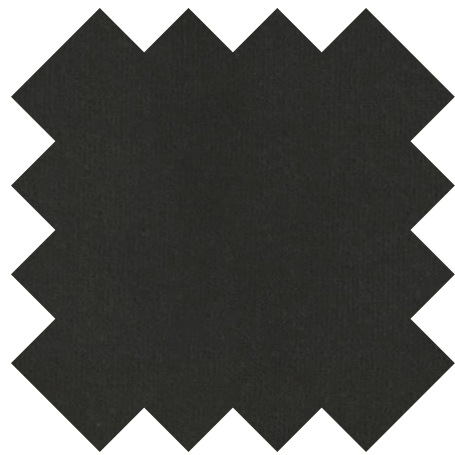
Bianco 01
White 01



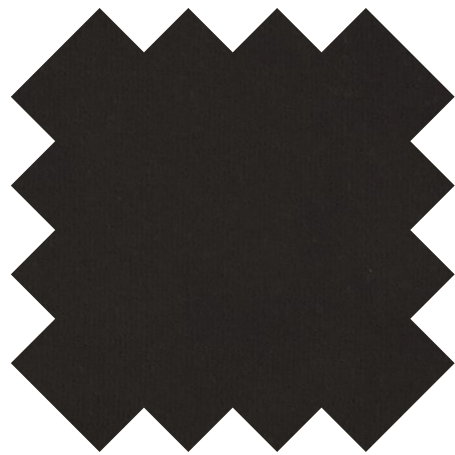
Écru 03
Écru 03



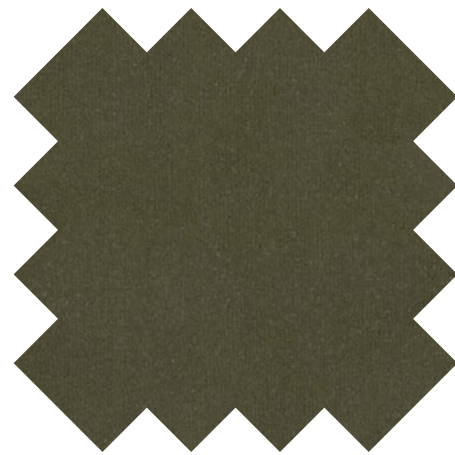
Grigio chiaro 07
Light grey 07



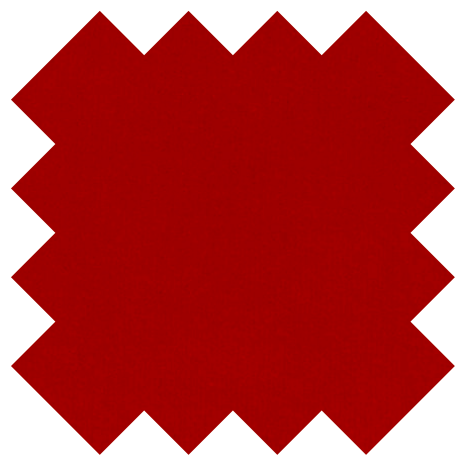
Grigio medio 09
Medium grey 09



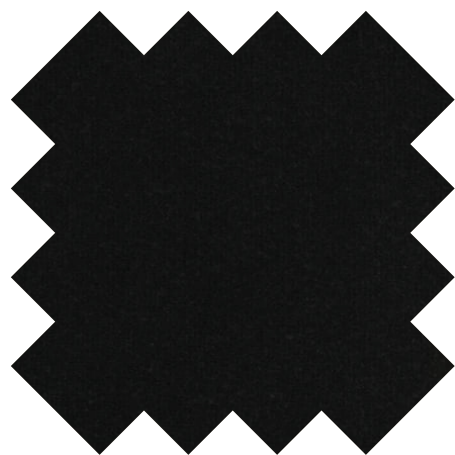
Marrone 25
Brown 25



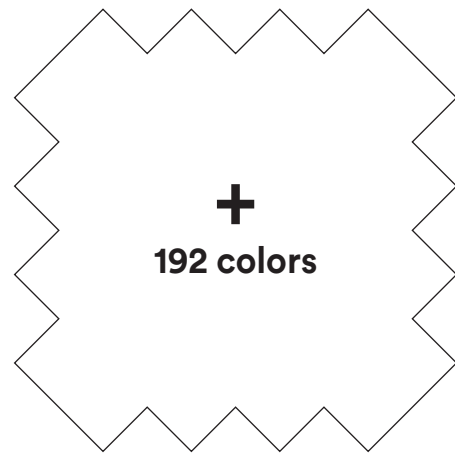
Verde 21
Green 21



Rosso 19
Red 19



Nero 15
Black 15



**+
192 colors**

**A preventivo
Upon request**

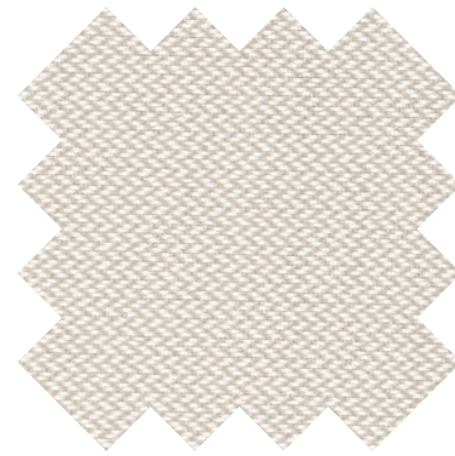
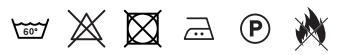
CATEGORIA B / CATEGORY B

• **REVIVE 1**

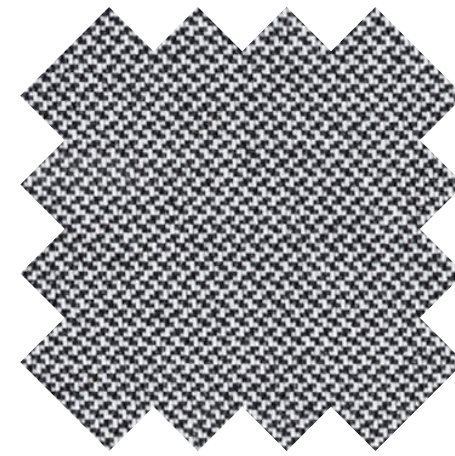
COMPOSIZIONE / COMPOSITION
100% recycled polyester FR

CARATTERISTICHE / CHARACTERISTICS
Ecosostenibile / Eco-friendly

DURABILITÀ / DURABILITY
60.000 Martindale



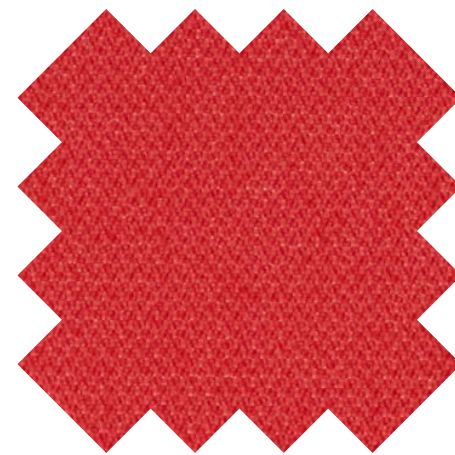
Écru 03
Écru 03



Grigio medio 09
Medium grey 09



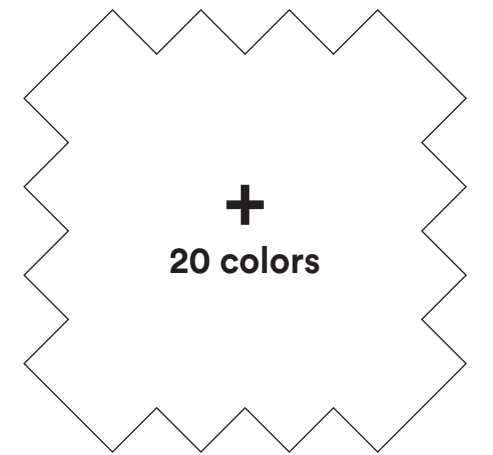
Marrone 25
Brown 25



Rosso 19
Red 19



Nero 15
Black 15



**+
20 colors**

**A preventivo
Upon request**

CATEGORIA B / CATEGORY B

• **TESSUTO ECOLOGICO / ECOLOGICAL FABRIC**

COMPOSIZIONE / COMPOSITION
100% polyester

CARATTERISTICHE / CHARACTERISTICS
Bielastico, ecosostenibile / Bi-elastic, eco-friendly

DURABILITÀ / DURABILITY
85.000 Martindale



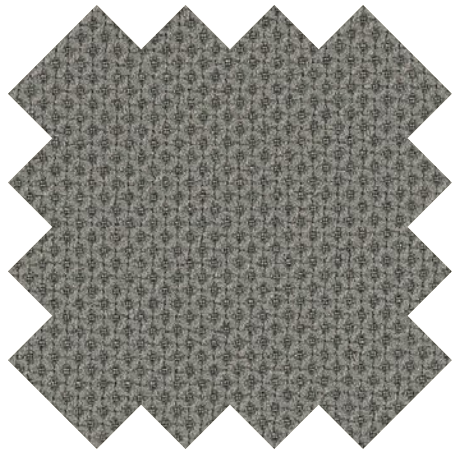
Panna 05
Cream 05



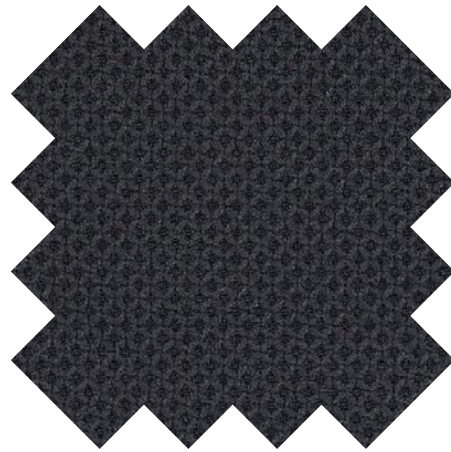
Écru 03
Écru 03



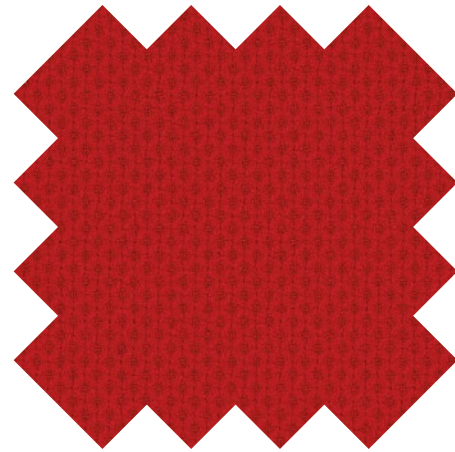
Grigio chiaro 07
Light grey 07



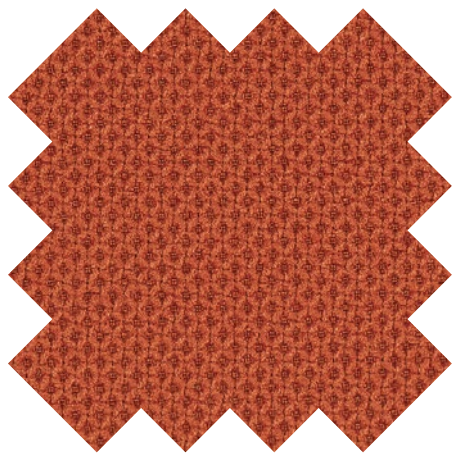
Grigio medio 09
Medium grey 09



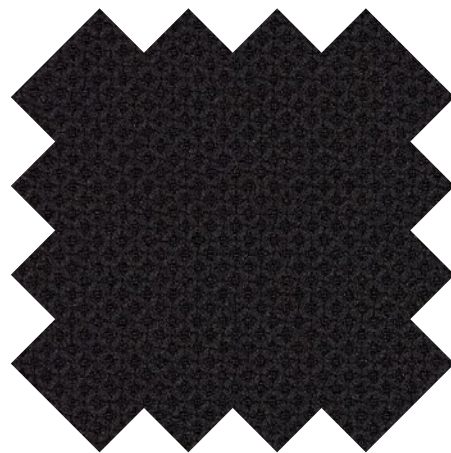
Grigio scuro 11
Dark grey 11



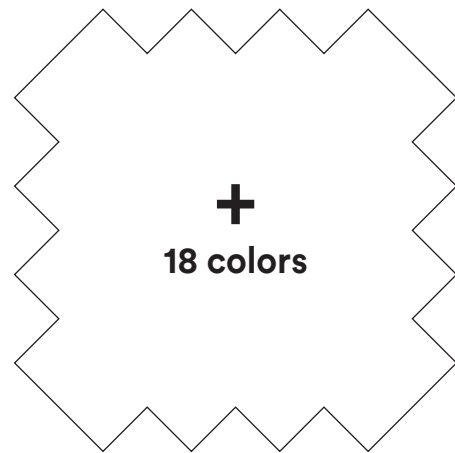
Rosso 19
Red 19



Ruggine 35
Rust 35



Nero 15
Black 15



**+
18 colors**

**A preventivo
Upon request**

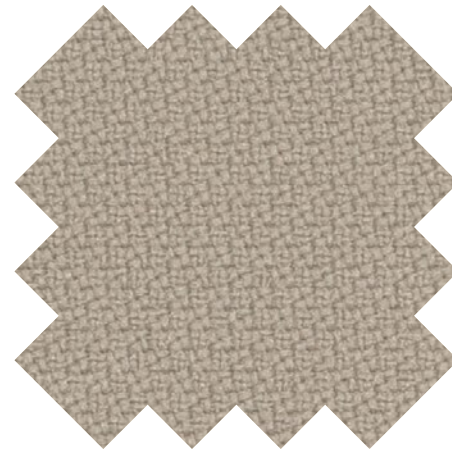
CATEGORIA B / CATEGORY B

• **TREVIRA**

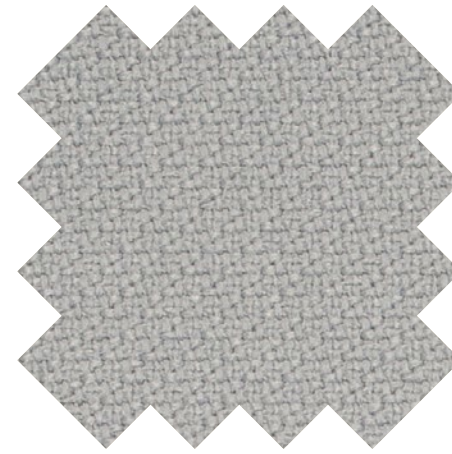
COMPOSIZIONE / COMPOSITION
100% Trevira

CARATTERISTICHE / CHARACTERISTICS
Ecosostenibile / Eco-friendly

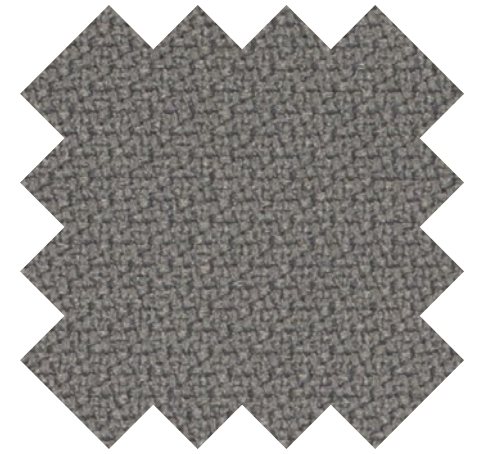
DURABILITÀ / DURABILITY
100.000 Martindale



Écru 03
Écru 03



Grigio chiaro 07
Light grey 07



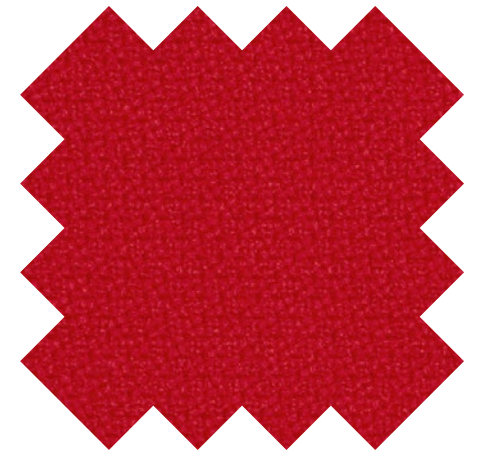
Grigio medio 09
Medium grey 09



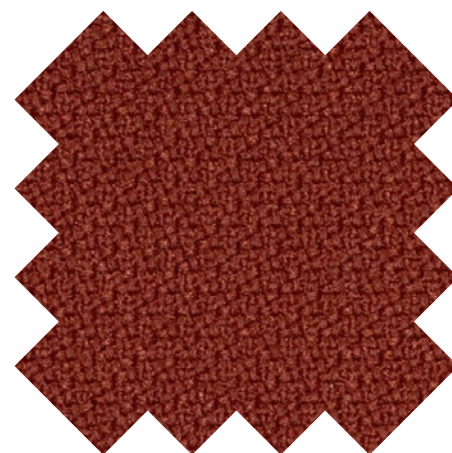
Grigio scuro 11
Dark grey 11



Fango 23
Mud 23



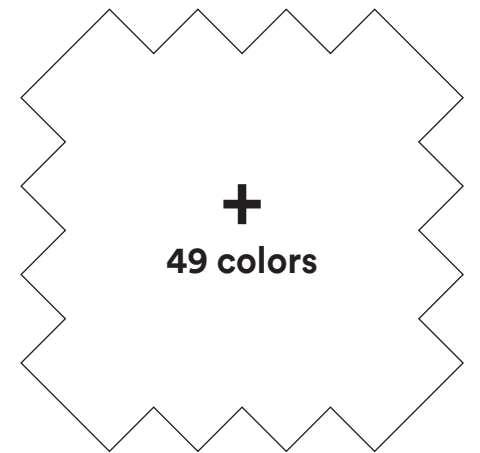
Rosso 19
Red 19



Ruggine 35
Rust 35



Nero 15
Black 15



**+
49 colors**

**A preventivo
Upon request**

CATEGORIA B / CATEGORY B

• CASENTINO ORIGINALE / ORIGINAL CASENTINO

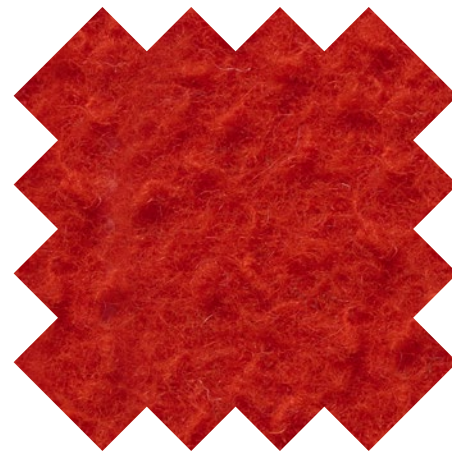
COMPOSIZIONE / COMPOSITION
100% pure wool



Bianco 01
White 01



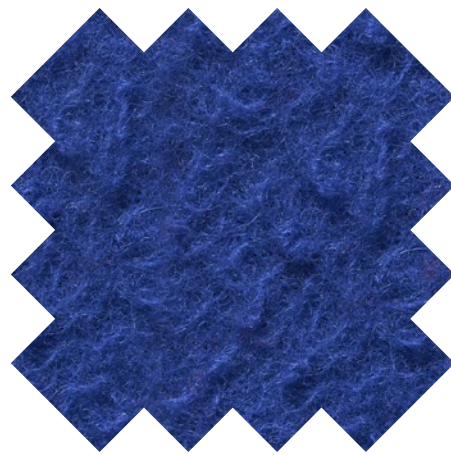
Biscotto 27
Biscuit 27



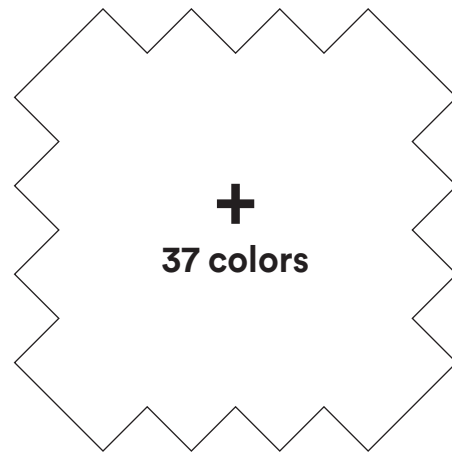
Rosso 19
Red 19



Verde 21
Green 21



Blu 30
Blue 30



+
37 colors

A preventivo
Upon request

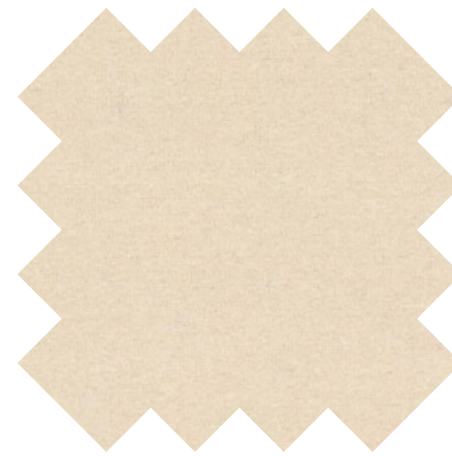
CATEGORIA C / CATEGORY C

• DIVINA 3

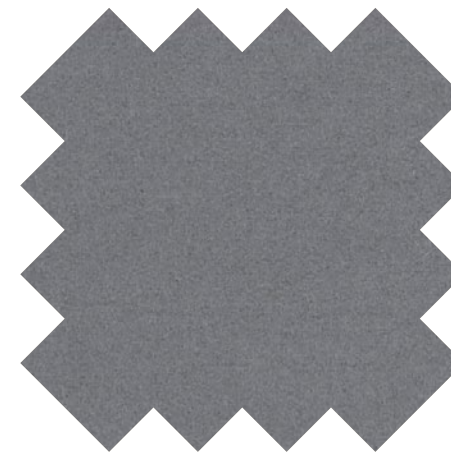
COMPOSIZIONE / COMPOSITION
100% new wool

CARATTERISTICHE / CHARACTERISTICS
Ecosostenibile / Eco-friendly

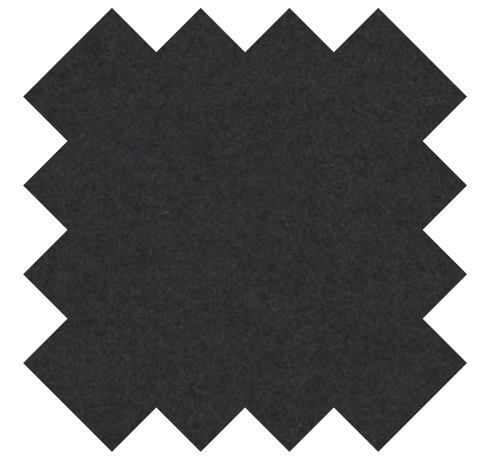
DURABILITÀ / DURABILITY
45.000 Martindale



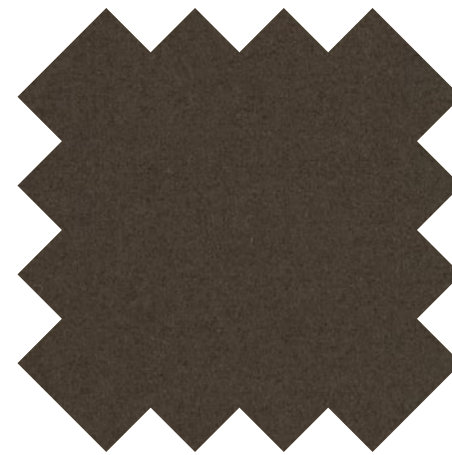
Bianco 01
White 01



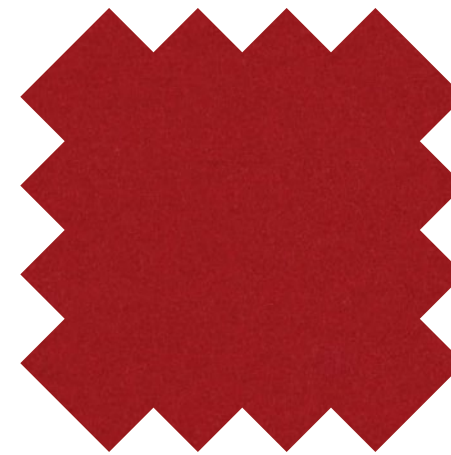
Grigio chiaro 07
Light grey 07



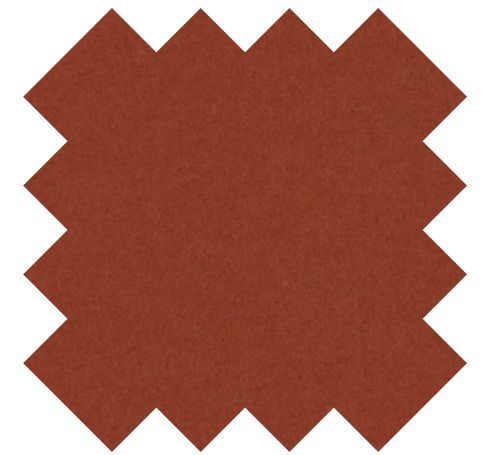
Grigio scuro 11
Dark grey 11



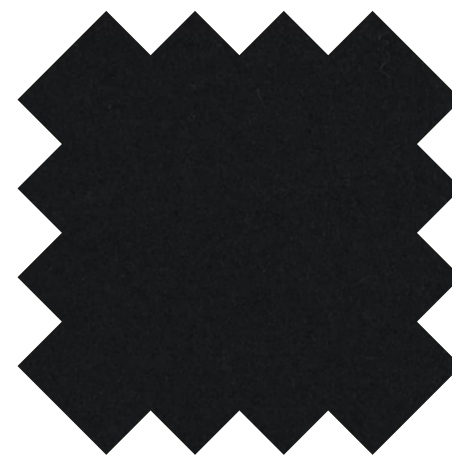
Fango 23
Mud 23



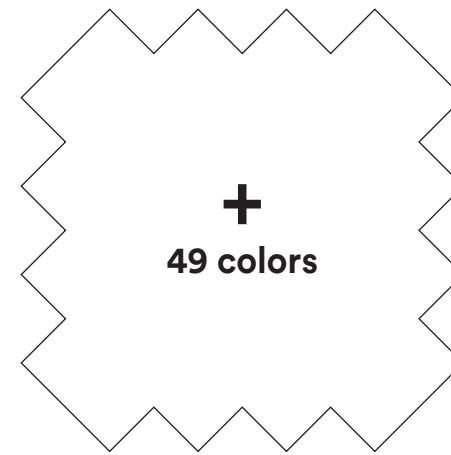
Rosso 19
Red 19



Ruggine 35
Rust 35



Nero 15
Black 15



+
49 colors

A preventivo
Upon request

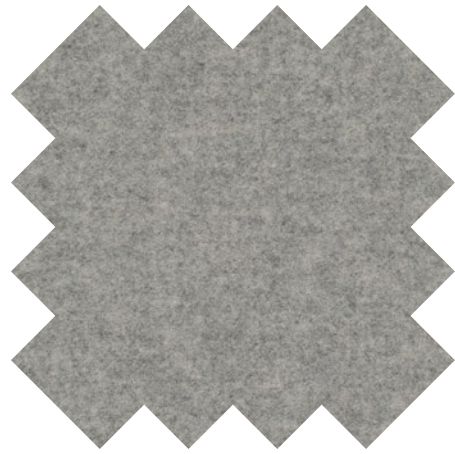
CATEGORIA C / CATEGORY C

• DIVINA MELANGE 3

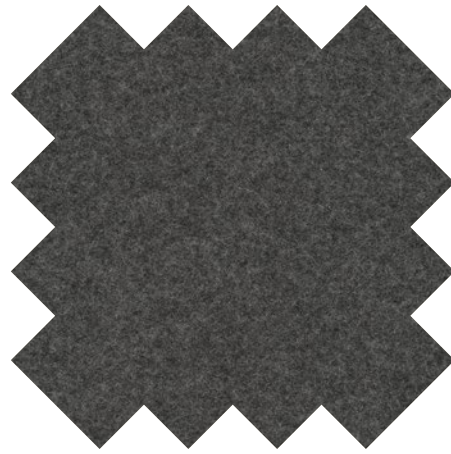
COMPOSIZIONE / COMPOSITION
100% new wool

CARATTERISTICHE / CHARACTERISTICS
Ecosostenibile / Eco-friendly

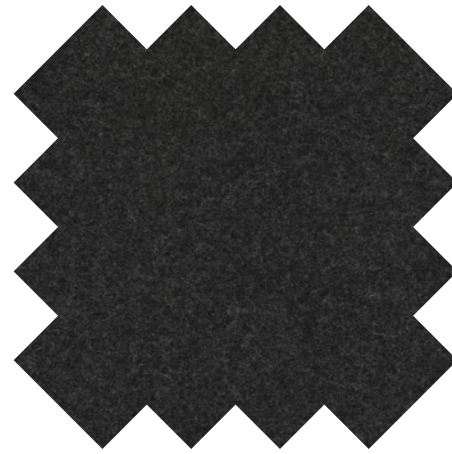
DURABILITÀ / DURABILITY
45.000 Martindale



Grigio chiaro 07
Light grey 07



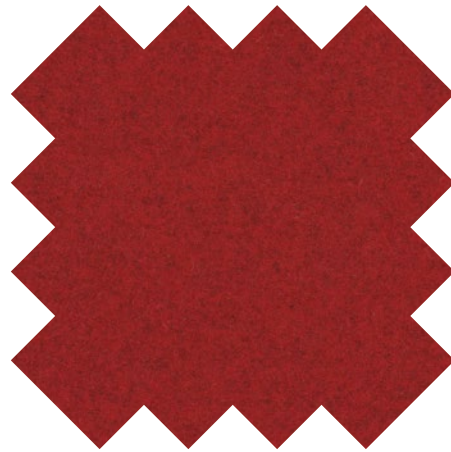
Grigio medio 09
Medium grey 09



Grigio scuro 11
Dark grey 11



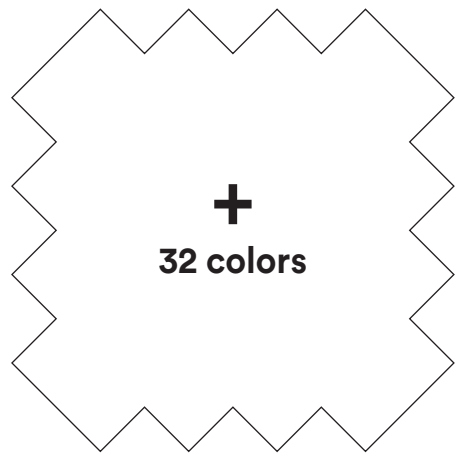
Marrone 25
Brown 25



Rosso 19
Red 19



Verde 21
Green 21



+
32 colors

A preventivo
Upon request

CATEGORIA C / CATEGORY C

• PELLICCIA ECOLOGICA A PELO LUNGO / LONG-HAIRED FAUX FUR

COMPOSIZIONE / COMPOSITION
100% polyester

CARATTERISTICHE / CHARACTERISTICS
Pelo lungo / Long hair



Bianco
White



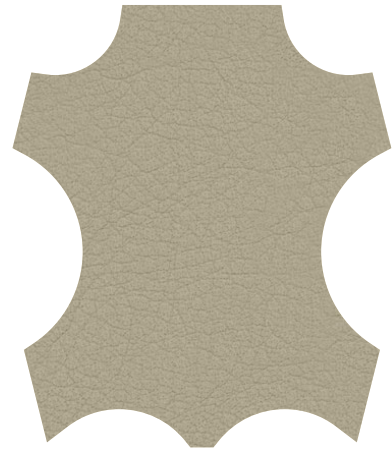
Nero
Black

CATEGORIA D / CATEGORY D

• **PELLE VINTAGE / VINTAGE LEATHER**

COMPOSIZIONE / COMPOSITION
Concia all'anilina / Aniline tanning

CARATTERISTICHE / CHARACTERISTICS
Effetto invecchiato / Distressed vintage effect



Écru 03
Écru 03



Grigio chiaro 07
Light grey 07



Grigio medio 09
Medium grey 09



Grigio scuro 11
Dark grey 11



Biscotto 27
Biscuit 27



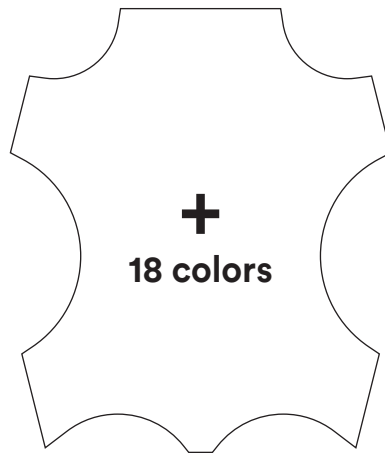
Cioccolato 31
Chocolate 31



Carbone 29
Carbon 29



Verde 21
Green 21



+
18 colors

A preventivo
Upon request

CATEGORIA D / CATEGORY D

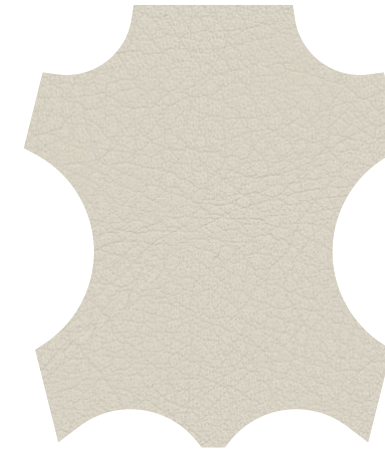
• **PELLE / LEATHER**

COMPOSIZIONE / COMPOSITION
Concia al cromo / Chrome tanning

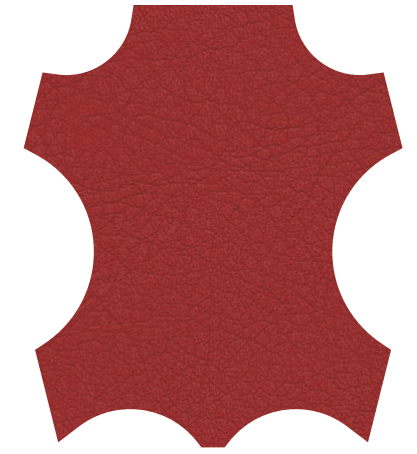
CARATTERISTICHE / CHARACTERISTICS
Mezzo fiore / Lightly buffed natural grain



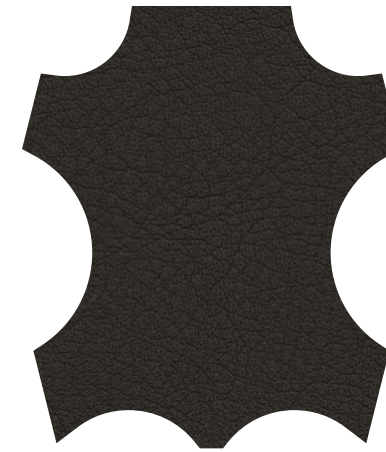
Bianco 01
White 01



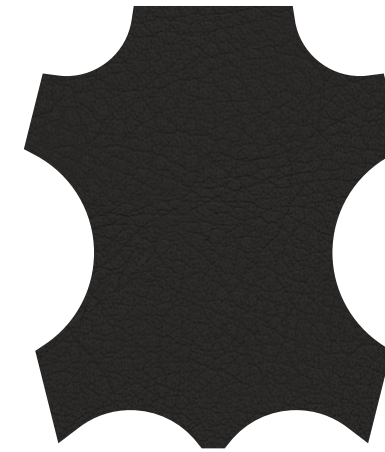
Écru 03
Écru 03



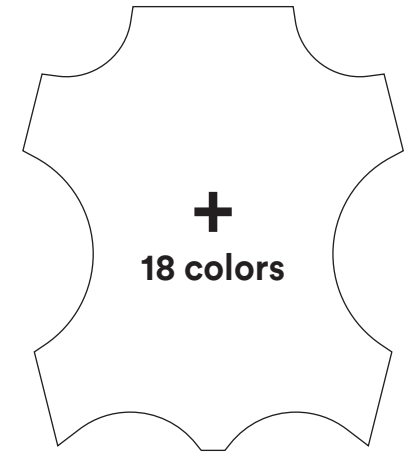
Rosso 19
Red 19



Marrone 25
Brown 25



Nero 15
Black 15



+
18 colors

A preventivo
Upon request

• **CUOIO / LEATHER**

COMPOSIZIONE / COMPOSITION
Cuio pieno fiore / Full grain leather

CARATTERISTICHE / CHARACTERISTICS
Concia al vegetale - ISO 14001:2015 / Vegetable tanning - ISO 14001:2015



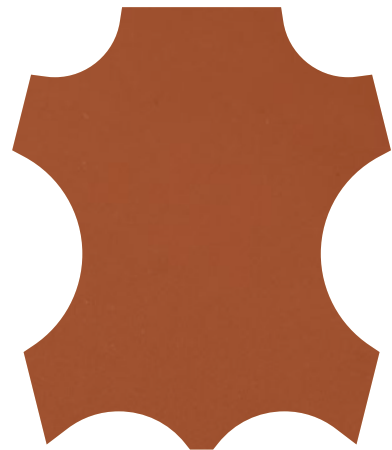
Cuoio naturale
Natural leather



Cuoio nero
Black leather

• **CUOIO RIGENERATO / REGENERATED LEATHER**

COMPOSIZIONE / COMPOSITION
Rigenerato di fibre di cuio / Regenerated leather fibers



Cuoio naturale
Natural leather



Cuoio nero
Black leather

• **PELLICCIA ECOLOGICA (solo per Mammamia) / FAUX FUR (only for Mammamia)**

COMPOSIZIONE / COMPOSITION
100% polyester

CARATTERISTICHE / CHARACTERISTICS
Pelo corto / Short hair

DURABILITÀ / DURABILITY
50.000 Martindale



Bianco
White



Rosa
Pink



Nero
Black

Opinion Ciatti Srl

via di Prato, 80
50041 Calenzano, Firenze - Italia
T.: + 39 055 88 70 91
F.: + 39 055 88 70 92 37
info@opinionciatti.com

Commerciale Italia
T.: +39 055 88 70 92 05
italia@opinionciatti.com

Export department
T.: +39 055 88 70 92 06
export@opinionciatti.com

Press Office
press@opinionciatti.com

Press Office International
ERGO
T: +39 02 43995057
info@ergo-online.it

www.opinionciatti.com

